

YMD11 YMD11-B YMD11-C YMD11-D

▲ Features

- S1 (64x64mm) Front element size (can be changed by mountings and optional extras)
- Terminal screws accessible from the installation view
- Designed for vertical wiring (resp. horizontal for -V mountings: e.g. VE-V, FS1-V)
- Finger-proof terminals (IP20)
- Forced opening and closing of the contacts; All terminals in one plane

▲ Technical Data

Rated Operational Voltage U_e 690V

Rated Insulation Voltage U_i 690V

Rated Thermal Current I_u/I_{th} 20A, 32A, 40A, 63A, 80A, 100A

AC-23A Frequent switching of motors or other high inductive loads

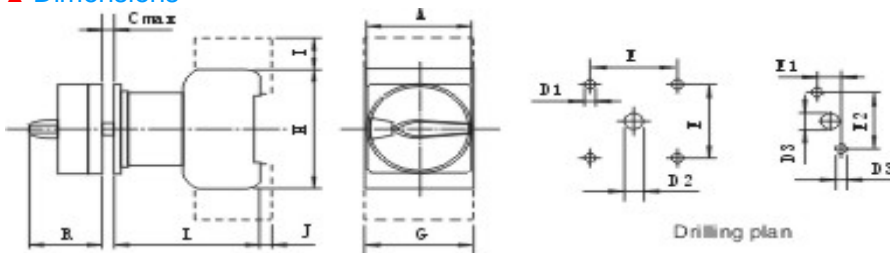
3 phase, 3 pole

AC-3 Direct-on-line starting, star-delta starting

3 phase, 3 pole

SWITCH	AC-23		AC-3	
	220~240V	380~440V	220~240V	380~440V
YMD11-25	4KW	7.5KW	3KW	5.5KW
YMD11-32	5.5KW	11KW	4KW	7.5KW
YMD11-40	7.5KW	15KW	7.5KW	11KW
YMD11-63	11KW	22KW	11KW	12.5KW
YMD11-80	18.5KW	30KW	15KW	22KW
YMD11-100	22KW	37KW	18.5KW	30KW

▲ Dimensions



SWITCH	E	E1	E2	D1	D2	D3	A	L	H	I	G	J	R	Cmax
YMD11-25	48	12.2	30	5	10-15	3.5	64	53.8	54	20	12	6	40.1	4
YMD11-32	48	12.2	30	5	10-15	3.5	64	53.8	54	20	12	6	40.1	4
YMD11-40	48	12.2/14	30/37	5	10-15	3.5/4.5	64	60.5	64	17	50	5.5	40.1	4
YMD11-63	48	12.2/14	30/37	5	10-15	3.5/4.5	64	60.5	64	17	50	5.5	40.1	4
YMD11-80	48	14	37	5	10-15	4.5	64	70.6	80	26	70	5.5	40.1	4
YMD11-100	48	14	37	5	10-15	4.5	64	70.6	80	26	70	5.5	40.1	4





YMD11-32D

Maintenance and Safety Switches (Main switches and main switches with emergency function in plastic enclosure) 3 pole; Plastic Enclosure

▲ Features

- S1 (64x64mm) Front element size (can be changed by mountings and optional extras)
- Terminal screws accessible from the installation view
- Designed for vertical wiring (resp. horizontal for -V mountings: e.g. VE-V, FS1-V)
- Finger-proof terminals (IP20)
- Forced opening and closing of the contacts; All terminals in one plane

▲ Technical Data

Rated Operational Voltage U_e 690V

Rated Insulation Voltage U_i 690V

Rated Thermal Current I_u/I_{th} 20A, 32A, 40A, 63A, 80A, 100A

AC-23A Frequent switching of motors or other high inductive loads
3 phase, 3 pole

AC-3 Direct-on-line starting, star-delta starting
3 phase, 3 pole

SWITCH	AC-23		AC-3	
	220~240V	380~440V	220~240V	380~440V
YMD11-25	4KW	7.5KW	3KW	5.5KW
YMD11-32	5.5KW	11KW	4KW	7.5KW
YMD11-40	7.5KW	15KW	7.5KW	11KW
YMD11-63	11KW	22KW	11KW	12.5KW
YMD11-80	18.5KW	30KW	15KW	22KW
YMD11-100	22KW	37KW	18.5KW	30KW

Main Switches and Main Switches with Emergency Function 3 pole; Base Mounting with Simplified Door Clutch and Padlock Device (Four Hole Mounting); Lockable Handle Disk

▲ Features

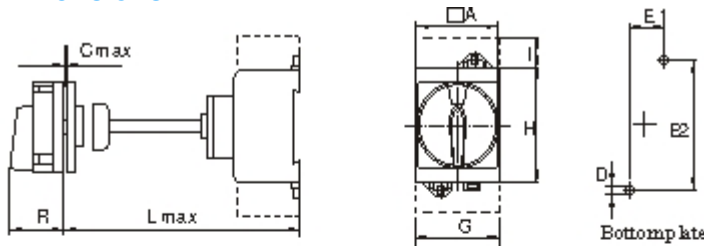
- S1 (64x64mm) Front element size (can be changed by mountings and optional extras)
- Terminal screws accessible from the installation view
- Designed for vertical wiring (resp. horizontal for -V mountings: e.g. VE-V, FS1-V)
- Finger-proof terminals (IP20)
- Forced opening and closing of the contacts; All terminals in one plane

▲ Technical Data

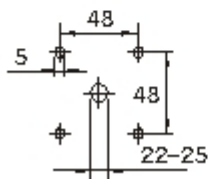
Rated Operational Voltage U_e 690V
 Rated Insulation Voltage U_i 690V
 Rated Thermal Current I_u/I_{th} 20A, 32A, 40A, 63A, 80A, 100A
 AC-23A Frequent switching of motors or other high inductive loads
 3 phase, 3 pole
 AC-3 Direct-on-line starting, star-delta starting
 3 phase, 3 pole

SWITCH	AC-23		AC-3	
	220~240V	380~440V	220~240V	380~440V
YMD11-25	4KW	7.5KW	3KW	5.5KW
YMD11-32	5.5KW	11KW	4KW	7.5KW
YMD11-40	7.5KW	15KW	7.5KW	11KW
YMD11-63	11KW	22KW	11KW	12.5KW
YMD11-80	18.5KW	30KW	15KW	22KW
YMD11-100	22KW	37KW	18.5KW	30KW

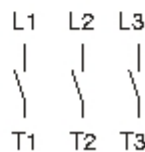
▲ Dimensions



TYPE	E1	E2	D	A	Lmax	H	I	G	R	Cmax
YMD11-25B	22	60	4.1	64	196	54	20	42	40.1	6
YMD11-32B	22	60	4.1	64	196	54	20	42	40.1	6
YMD11-40B	25	70	4.1	64	196	64	17	50	40.1	6
YMD11-63B	25	70	4.1	64	196	64	17	50	40.1	6
YMD11-80B	25	90	5.2	64	386	80	26	70	40.1	6
YMD11-100B	25	90	5.2	64	386	80	26	70	40.1	6



Front panel drilling plan



Connecting diagram

Moujen Europe B.V.

Buitenbrinkweg 41 3853 LT Ermelo Tel: +31(0)341-558477 Fax: +31(0)341-561431
 E-mail: info@moujen.com Internet: www.moujen.com

YMW26-20 YMW26-32 YMW26-63

▲ Features

- S0 (48x48mm) Front element size (can be changed by mountings and optional extras)
- Terminal screws accessible laterally (resp. from above and below for -V mountings)
- Designed for vertical wiring (resp. horizontal for -V mountings: e.g. VE-V, FS1-V)
- Finger-proof terminals (IP20)

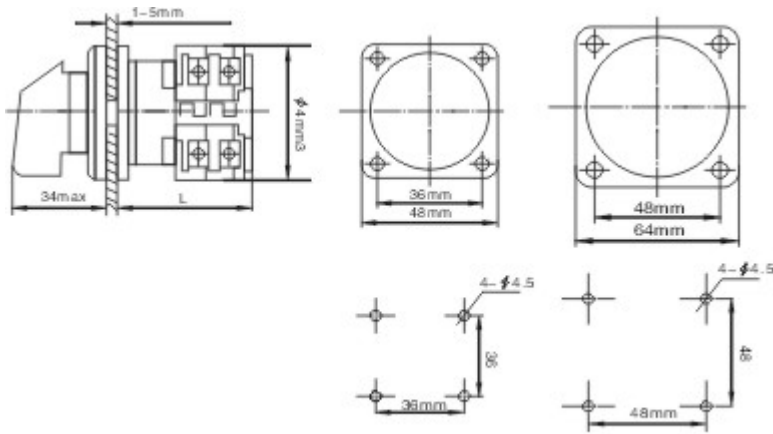
▲ Technical Data

Rated Operational Voltage Ue	690V
Rated Insulation Voltage Ui	690V
Rated Thermal Current Iu/Ith	20A
Rated Operational Current Ie AC-15 Switching of control devices, contactors, valves etc.	220V-240V: 5A 380V-440V: 4A
AC-20A No-load operation	20A
AC-21A Switching of resistive loads, including moderate overloads For switching of power >1kW	20A
AC-22A Switching of combined resistive or low inductive loads including moderate overloads	220V-500V: 20A 660V-690V: 20A
Rated Utilization Category AC-2 Slip ring motor starting, reversing and plugging, star-delta starting 3 phase, 3 pole	220V-240V: 4kW 380V-440V: 7.5kW 500V-500V: 10kW 660V-690V: 10kW
AC-3 Direct-on-line starting, star-delta starting 3 phase, 3 pole	220V-240V: 3kW 380V-440V: 5.5kW 500V-500V: 5.5kW 660V-690V: 5.5kW
AC-4 Direct-on-line starting, reversing, plugging and inching 3 phase, 3 pole	220V-240V: 0.55kW 380V-440V: 1.5kW 500V-500V: 1.5kW 660V-690V: 1.5kW
AC-23A Frequent switching of motors or other high inductive loads 3 phase, 3 pole	220V-240V: 3.7kW 380V-440V: 7.5kW 500V-500V: 7.5kW 660V-690V: 7.5kW





▲ Dimensions



Drilling plan